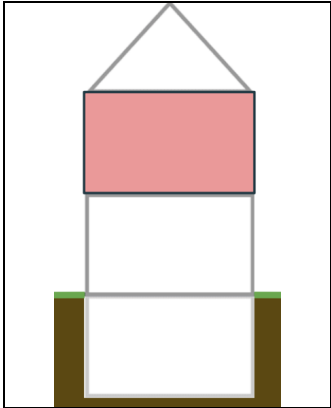
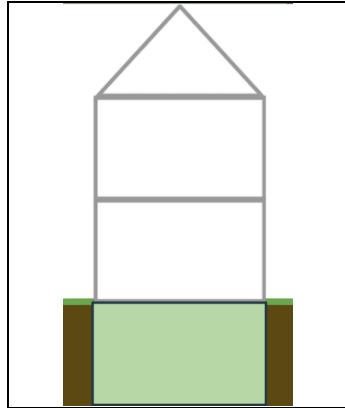


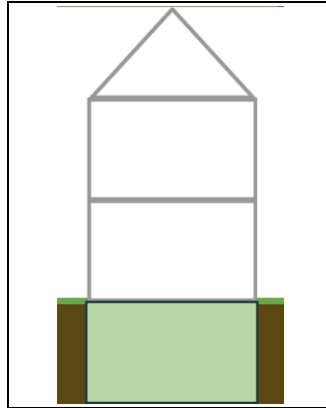
Domus - Vocābula



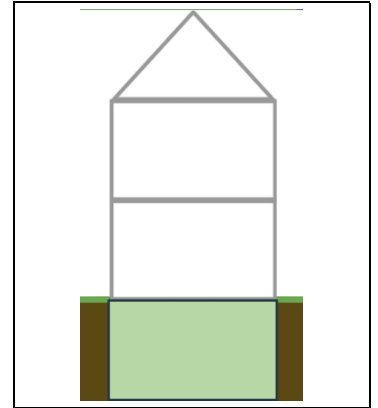
Hypogaeum



Pedepłana



Prīma Tabulāta



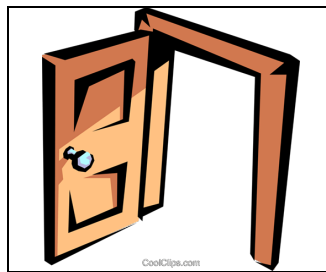
Cēnāculum



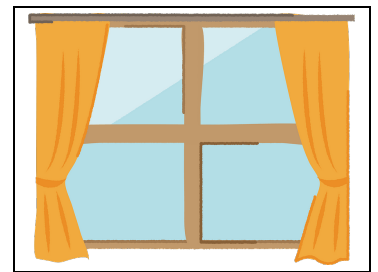
Domus



Scālae



Iānuā



Fenestra



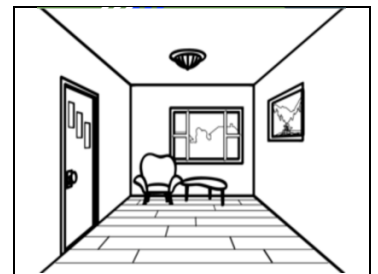
Conclāve



Tectum



Pariēs



Solum



Ambulācrum



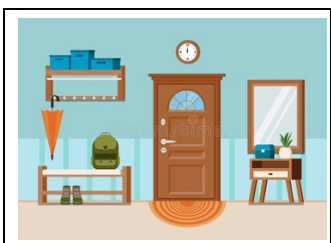
Sessōrium



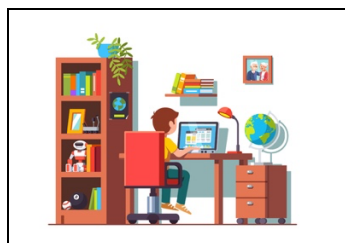
Cēnātiō



Culīna



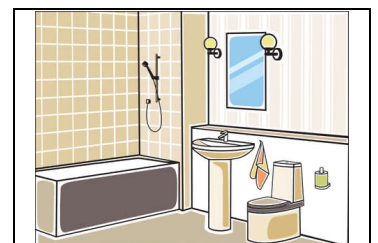
Vestibulum



Tablinum



Cubiculum



Latrīna